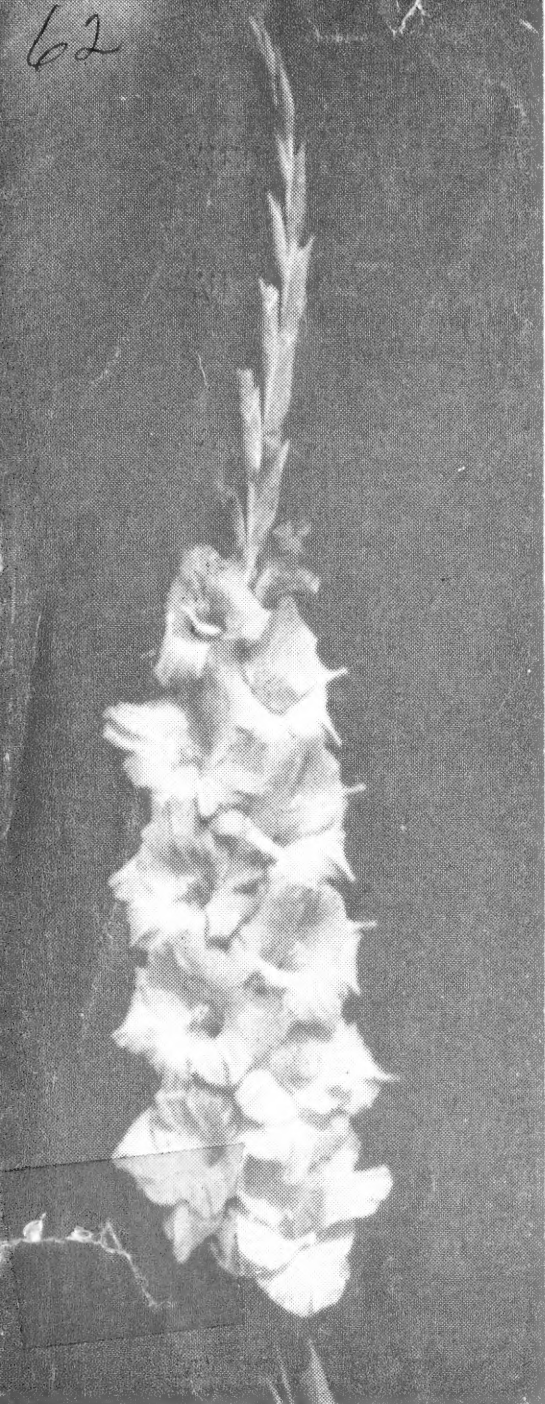


62

Se



GLADIOLUS

LIBRARY
RECEIVED
JAN 16 1958 ★
U. S. Department of Agriculture

FOR

1958

Featuring the New
All-American Gladiolus Selections

Loveland Glad Gardens

Division of
KROH NURSERIES

P. O. Box 536

Loveland, Colorado

SEC. 34.66 P.L. & R.
U. S. POSTAGE

PAID

land, Colorado

Library U. S. Dept. of Agriculture Permit No. 5

Washington 25, D. C.

Form 3547 Requested

1957 - 1958 GLADIOLUS OFFERINGS

We take pleasure in presenting our 1957-1958 catalog for your approval and consideration in which is listed nearly 80 varieties of Gladiolus covering a wide range of color and sizes. Prices in various quantities to best fit your needs.

Glads are quite easily grown and are not exacting as to soil. For best results we suggest they be planted in rows of 18 to 24 inches apart with about three large bulbs or five or six medium bulbs per lineal foot. Of most importance is to get good varieties and young vigorous bulbs.

BUSINESS TERMS

Please Read Carefully

We aim to send out only healthy bulbs, guaranteed true to name, dusted for thrip, and will cheerfully refund the purchase price on any order found unsatisfactory upon receipt and promptly returned; but no guarantee of growth is implied in the sale (careless use of chemical dips and sprays makes this mandatory) nor will we be responsible for the crop. In no case will we break units quoted. All orders with Remittance enclosed of \$3.50 or more are prepaid in U.S.A. C.O.D. orders are shipped postage and balance collect, however we add extras to more than cover postage costs. Orders for less than \$3.50 add 35c to cover packaging and postage. We will hold your order in storage for shipment prior to planting season unless requested to mail earlier.

EXTRAS: We give full count on bulbs and bulblets and to be absolutely sure, a few more on larger quantities: In addition, we include some extras on every retail order, larger orders of course, receiving the larger percentage of bonus bulbs. We appreciate your suggestions on varieties desired as bonus bulbs.

REMITTANCE should accompany all orders; or a 25% deposit, balance C.O.D. COLORADO residents must add 2% tax.

NOTE: In ordering, please specify desired delivery date, size and number of bulbs of a variety. F. O. B. Wholesale Prices for Jobbers and Growers on request.

ALL-AMERICAN GLADIOLUS SELECTIONS

In an effort to better serve their customers, our North America Gladiolus Grower Association has established the organization Select Glads Inc. Select Glads Inc. has thirty directors operating thirty test gardens reaching from British Columbia to Florida, and Ontario to California. Hundreds of Hybridizers pet seedlings are grown in each and all test gardens under a number so the director doesn't know whose pet it is. Performance ratings are given each seedling by each director as he observes it in his test garden. Seedling ratings from all the test gardens, with widely varying climate and soils, are compiled by Executive Secretary of Select Glads Inc. Directors then study the composite rating and select the All-American winners if any are deemed worthy. This selection and award should assure the fanciers guidance in getting the top new variety introduced.

Two fine varieties received A.A.G.S. Award in 1956 and 1957 with Emperor being the only selection for 1958.

APPLE BLOSSOM 460 (Baerman-Fisher A.A.G.S. '56) (Pat)

A gladiolus of the utmost delicacy of coloring, the predominating hue being snowy white with a faint touch of cream in the throat and an exquisite flush of corona or cool rose pink at the edges of the petals. Up to eight or ten trimly tailored florets, about five inches in diameter and of a very heavy substance, are open at a time on spikes up to five feet tall.

ROYAL STEWART 450 (Pommert A.A.G.S. '56) (Pat)

A truly remarkable new gladiolus variety that has been widely acclaimed for its consistently fine performances. The lightly ruffled florets are five inches in diameter and are of good substance. They are a clear light red and the long flowerheads frequently carry up to twelve flowers open at one time.

CARIBBEAN 376 (Baerman-Fisher A.A.G.S. '57) (Pat)

The delicate blue tones of this exciting novelty present an unusual combination of rare blue-violet petals handsomely embellished by a rich, deep violet throat and a small cream spear. CARIBBEAN opens from 9 to 11 precisely styled florets at one time in formal, double-row placement. It possesses a quality uncommon to many varieties and almost a rarity among "so-called blue glads", that of extreme vigor.

MAYTIME 442 (Baerman-Fisher A.A.G.S. '57) (Pat)

A light-hearted charm surrounds this brightly colored glad. The gracefully ruffled deep, pure pink florets with their contrasty large white throats bring back the memory of the freshness of May-blooming flowers. MAYTIME is a lithesome glad of good height. It readily opens 8 to 10 florets on spikes of five and one-half feet tall. A robust grower, MAYTIME has wonderful plant health

1958 ALL AMERICAN GLADIOLUS SELECTION

EMPEROR 471 (Baerman-Fisher A.A.G.S. '58) (Pat)

A true aristocrat, this glad of regal purple trimmed in ermine-white presents a stately display. Emperor makes majestic spikes growing five feet or more tall with 7-8 of its round, recurved florets open at one time. The plants are unusually robust and the spikes consistently tall and straight. The rich, distinctive color of Emperor, its health and vigor, and ease of growing are characteristics which make it an ideal flower for the home garden. It has already distinguished itself on the show table as a seedling and it possesses the qualities of a champion. The outstanding color and fine qualities of Emperor resulted in All-American Award for 1958.

Priced (All varieties and large bulbs only) 50c each, 6 for \$2.65, 12 for \$5.00 of one variety or a combination of varieties, 1 each of the 5 varieties \$2.25.

GENERAL LISTING

BULB SIZES: Glad bulb sizes are measured in diameter only. Large (Lg.) 1 1/4" up; Medium (Med.) 3/4-1 1/4"; Small (Sm.) 1/2-3/4"; Bulblets (Bbts.) are hand selected.

ALL VARIETIES SEPARATELY PACKAGED AND LABELED

ALFRED NOBEL 445 (Alman '54)

A deep pink with a large cream blotch. Very healthy and a strong grower. Opens 6-8 florets on a 20 bud spike.

Lg. 2 for 25c; Med. 4 for 25c.

ANNAMAE 400 (Pommert '40)

One of the earliest as well as one of the whitest glads. Medium height with large florets.

Lg. 3 for 25c; Med. 5 for 25c.

BARRETT'S BEAUTY 401 (Barrett)

A glorified violet Dickinson. Ruffled white with lavender lines in the throat.

Lg. 2 for 25c; Med. 4 for 25c; Sm. 6 for 25c; Bbts. 50 for 35c.

BOISE BELL 433 (Roberts '48)

Yellow center and pink edges of petals with the lip petals yellow with a picotee edge of pink all around. A very unusual exceptional novelty with unique beauty.

Lg. 2 for 25c; Med. 4 for 25c; Sm. 6 for 25c.

BRANDY WINE 470 (Howell '53)

Shiny dark maroon that takes heat well.

Lg. 2 for 25c; Med. 4 for 25c; Sm. 6 for 25c.

BRIDAL ORCHID 566 (Carlson-Puerner '50)

A lovely pastel lavender opening 10 6-inch florets on a straight spike.

Lg. 2 for 25c; Med. 4 for 25c; Sm. 6 for 25c.

BUCKEYE BRONZE 490 (Wilson '40)

One of our most popular glads. A rusty, bronzy orange that is quite ruffled.

Lg. 2 for 25c; Med. 4 for 25c; Sm. 6 for 25c.

BURMA 564 (Palmer '43)

This is a deep ruffled, reddish rose that opens 6 to 8 florets on a straight spike. Very popular as a garden glad.

Lg. 3 for 25c; Med. 5 for 25c; Sm. 8 for 25c.

CAPTAIN KIDD 452 (Robert's '50)

Dark, velvety maroon red, produces tall spikes.

Lg. 2 for 25c; Med. 4 for 25c; Sm. 6 for 25c.

CHINOOK 532 (Lines '49)

Pure rich clear salmon. Grows nearly 6 feet tall on an always straight stem. Opens 9 6-in. florets with several more showing. Very attractive and stands out in any company.

Lg. 2 for 25c; Med. 4 for 25c; Sm. 6 for 25c.

COLUMBIA 407 (Roberts '51)

A 1951 introduction. Strikingly beautiful light cream with a bright rose border around each petal. One of the most popular glads.

Lg. 2 for 25c; Med. 4 for 25c; Sm. 6 for 25c.

CORAL ACE 532 (Bunn '52)

Bright, rich coral. A sport of burma carrying all the fine characteristics of that famous gladiolus.

Lg. 2 for 25c; Med. 4 for 25c; Sm. 6 for 25c.

CRINKLE CREAM 410 (Ellis '40)

(Midseason) Beautiful ruffled clear light yellow. Opens 4-6 well placed blooms on a tall plant. Very beautiful and refined.

Lg. 2 for 25c; Med. 4 for 25c; Sm. 6 for 25c.

CRUSADER 301 (Fischer '52)

A frosty snowy-white beautifully ruffled and embellished with a gorgeous pansy purple throat. It opens 7-9 neatly tailored florets.

Lg. 2 for 25c; Med. 4 for 25c; Sm. 6 for 25c.

ELMER'S ROSE 462 (Fischer '51)

Here is another fine rose colored glad from the Fischer introduction, that makes very fine large spikes. Has a purple feather in the throat that adds to its beauty.

Lg. 2 for 25c; Med. 4 for 25c; Sm. 6 for 25c.

EXOTIC 530 (Lins '53)

Ruffled delicate soft buff salmon, blending to a prominent pure soft blush white throat. One of the most refined gladiolus we know of, good flower heads with large wide open, well attached and perfectly placed bloom. Blooms midseason.

Lg. 2 for 35c; Med. 2 for 25c; Sm. 4 for 25c.

FLORENCE NIGHTENGAL 400 (Harris '47)

A fine ruffled clear white shading to light cream throat. A white that could easily take the blue ribbons.

Lg. 3 for 25c; Med. 5 for 25c; Sm. 8 for 25c.

FLORIBUNDA 540 (Pruitt '54)

A good vigorous variety of a pastel pink which will open 9 large florets and a 21 bud spike.

Lg. 25c ea.; Med. 2 for 35c; Sm. 2 for 25s.

FORSYTHIA 512 (Harris '52)

A chartreuse cast which fades when florets are fully out to a clear medium yellow. Will open 6 or 7 large frilled waved florets on spikes of good height.

Lg. 25c ea.; Med. 2 for 35c.; Sm. 2 for 25c.

GRATIA 576 (De-Be '53)

Light to medium blue with a deeper blue violet lower pedal. Opens 4-5 on good spike.

Lg. 2 for 35c; Med. 2 for 25c; Sm. 4 for 25c.

GOLD 412 (Marshall 51)

Here is the rich deep golden yellow that many have been looking for, for years. It will open six or eight on a 17-bud spike that is five feet tall.

Lg. 35c ea.; Med. 25c ea.; Sm. 2 for 25c.

GOLDEN ARROW 510 (Pruitt '47)

Clean light yellow that opens up to 8 recurved florets on a spike of medium height.

Lg. 2 for 25c; Med. 4 for 25c; Sm. 6 for 25c.

HARRISBURGER 552 (Mikle)

A marvelous clear deep cherry red; large very tall, and a rugged grower.

Lg. 2 for 25c; Med. 4 for 25c; Sm. 6 for 25c; Bbts. 50 for 35c.

HAMLET 454 (Larus '50)

Tall clear dark red that opens 6 large blooms on a 16-17 bud spike. It is a strong grower.

Lg. 2 for 25c; Med. 4 for 25c; Sm. 6 for 25c; Bbts. 100 for 35c.

HAN VAN MEEGEREN 412 (Europe '50)

Deep buttercup yellow. Medium height with 6-8 5" florets open at a time. Healthy and prolific.

Lg. 2 for 25c; Med. 4 for 25c; Sm. 6 for 25c; Bbts. 50 for 35c.

HEART'S DESIRE 542 (Fidler-Puerner '48)

Beautiful, large, heavily ruffled light pink blending to creamy throat. Florets are wide open with raised mid-ribs. Opens 8 florets of waxy substance on a well-balanced spike.

Lg. 2 for 25c; Med. 4 for 25c; Sm. 6 for 25c; Bbts. 100 for 35c.

INDIAN SUMMER 482 (Langworthy '49)

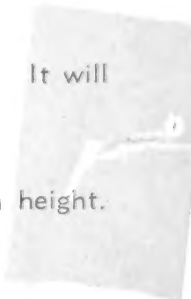
A tall vigorous-growing smoky-burnt orange with the edges of the petals a plum color and red markings on the lower petals.

Lg. 2 for 25c; Med. 4 for 25c; Sm. 6 for 25c.

JUNO 460 (Fischer '55)

Has a rose color like a sheer chiffon veil through which an undertone of salmon appears. Florets are frilled and slightly recurved. Will open 7-8 on an 18-20 bud spike.

Lg. 2 for 35c; Med. 2 for 25c; Sm. 4 for 25c.



KAREN 465 (Mazur '52)

One of the most striking novelties. Indian Lake Red or rose-purple with a large cream blotch. Opens 7 well paced florets on a long flowerhead.

Lg. 2 for 35c; Med. 2 for 25c; Sm. 4 for 25c; Bbts. 40 for 35c.

KING DAVID 570 (Carlson-Puerner '51)

Rated as the best 1951 introduction. A deep royal purple with rich velvet red throat. Heavily ruffled, winged and fluted. It is a tall grower carrying 22-24 buds, opening 8-10 florets that don't sun burn.

Lg. 2 for 25c; Med. 4 for 25c; Sm. 6 for 25c.

LEAH GORHAM 451 (Gorham '51)

A striking and attractive light red with a clean white throat on a tall straight spike.

Lg. 2 for 25c; Med. 4 for 25c; Sm. 6 for 25c.

LILAC TIME 466 (Howell '55)

Extra early lavender, always straight and tall. Opens 6-8 on tall spikes.

Lg. 35c ea.; Med. 25c ea.

LOOK 540 (Rockley '53)

It is easy to see why this tall light pink glad got its name—towering above most other varieties. Open six huge florets that occasionally show a little flecking.

Lg. 2 for 35c; Med. 2 for 25c; Sm. 4 for 25c.

MABLE VIOLET 570 (Salman '53)

Very tall purple violet with large florets of velvety sheen. Opens 6-8 on strong spikes.

Lg. 2 for 25c; Med. 4 for 25c.

MARGARET JEAN 520 (Ogilvie '50)

(Early) A new orange that has won oodles of prizes. Said to be the best in the light orange class.

Lg. 2 for 25c; Med. 4 for 25c; Sm. 6 for 25c.

MARGERIE 462 (Melk '53)

Very bright and attractive medium rose with a small deeper rose feather, has a deeper flecking which does not detract.

Lg. 35c ea.; Med. 25c ea.; Sm. 2 for 25c; Bbts. 30 for 35c.

MOTHER FISCHER 400 (Fischer '51)

One of the best new whites, immaculately chaste, heavy ruffle, strong vigorous grower shows trace of pink in cool weather.

Lg. 2 for 25c; Med. 4 for 25c; Sm. 6 for 25c.

MY DEAR 440 (Sisson '48)

Quite a nice ruffled light pink. Opens 5-7 very pretty florets on medium spike.

Lg. 2 for 25c; Med. 4 for 25c; Sm. 6 for 25c.

MYRNA FAY 466 (Lins '46)

One of, if not the best early orchid lavender. Opens up to 10 florets on a willowy straight spike. Best when blooms early. Will fleck in hot weather.

Lg. 3 for 25c; Med. 5 for 25c; Sm. 8 for 25c.

NOWETA ROSE 568 (Fischer '50)

Sensational rose that has won a lot of popularity. Color is a clean lavender rose with 20-24 buds of which 6-8 are open at a time. A fine color and all around good variety.

Lg. 2 for 25c; Med. 4 for 25c; Sm. 6 for 25c.

OKINAWA 381 (Loar '50)

Have grown it for years, and still think it by far the best dark smoky there is to date. Color hard to describe. Chocolate with rose orange tints, and reddish brown throat marks.

Lg. 2 for 25c; Med. 4 for 25c; Sm. 6 for 25c.

PACTOLUS 417 (K & M '47)

Apricot cream with orange red blotch. Opens 8-10 wide open well placed flowers with firm attachment. Only medium height but an exceedingly showy and beautiful variety that is immensely popular.

Lg. 2 for 25c; Med. 4 for 25c; Sm. 6 for 25c.

PAINTED LADY 443 (Roberts '52)

A most unusual color novelty; deep pink with a prominent pure white throat and lip petals, the latter being bordered with a variable edging of scarlet. Florets are large, nicely ruffled, and of good substance, with about six open at once.

Lg. 2 for 25c; Med. 4 for 25c; Sm. 6 for 25c.

PANDORA 443 (Beatrice-Palmer '40)

Clear, soft geranium pink with somewhat darker lines in throat.

Lg. 3 for 25c; Med. 5 for 25c; Sm. 8 for 25c.

PARTHINEA 568 (Hitchcock '49)

Giant deep lavender. Opens 6-8 somewhat ruffled well placed blooms on a long head. This is entirely different from anything else and a really gorgeous variety.
Lg. 2 for 25c; Med. 4 for 25c; Sm. 6 for 25c.

PINNACLE 578 (Jack '56)

A light blue, with petals long and wavy and flaring like Noweta Rose, studded with a purple blotch. Will open 9-11 on large strong spikes.
Lg. 50c ea.; Med. 35c ea.; Sm. 25c ea.; Bbts. 15 for 35c.

POINSETTIA 450 (Weeks)

A pure light spectrum red, with slightly ruffled florets. It will open six to seven florets on a very tall sturdy spike. A very impressive glad, useful addition to the commercial.
Lg. 2 for 25c; Med. 4 for 25c; Sm: 6 for 25c.

PRINCESS 466 (Larus '53)

Fine medium lavender with slightly darker feather. Opens many florets at once. Similar but a lighter shade than Elizabeth the Queen, appearing to be a much stronger and taller grower.
Lg. 2 for 35c; Med. 2 for 25c; Sm. 4 for 25c; Bbts. 40 for 35c.

PURPLE BURMA 570 (Boewe '55)

Purple sport of Burma, early ruffled heavy substance, long heads, vigorous grower. Opens 6-8 florets on a strong spike.
Lg. 2 for 35c; Med. 2 for 25c; Sm. 4 for 25c.

RADIANCE 350 (Butt '42)

A very early light red with deeper feather in the throat. An attractive color. Has good placement with 8 medium size florets open. Good early cut flower.
Lg. 25c ea.; Med. 2 for 25c; Sm. 4 for 25c.

RAJAH 570 (Jack '51)

A royal purple with no markings. Florets, large round and ruffled. Opens 7 or more on large spikes.
Lg. 2 for 25c; Med. 4 for 25c; Sm. 6 for 25c.

RECOMPENSE 410 (Pruitt)

Clear pastel yellow with lined blotch of clear red. Opens 6-8 florets on very vigorous spikes.
Lg. 2 for 35c; Med. 2 for 25c; Sm. 4 for 25c.

RED CHARM 452 (Butt '39)

Deep sparkling clear red. Wonderful growing habits.
Lg. 3 for 25c; Med. 5 for 25c; Sm. 8 for 25c.

RED CHERRY 436 (Roberts '46)

A brilliant cherry red with a slightly darker throat. One of the best reds.
Lg. 2 for 25c; Med. 4 for 25c; Sm. 6 for 25c.

RED FEATHER 552 (Butt '51)

Tall immense deep red that can make huge spikes. Opens up to 10 6" florets at once in good placement.
Lg. 2 for 35c; Med. 2 for 25c; Sm. 4 for 25c; Bbts. 40 for 35c.

RED WING 436 (Wright '48)

Fine Scarlet. Useful both for exhibition and for commercial use. Opens up to 10 large blooms with 6 more showing on a head of 22 or more buds. Becoming very popular. Looks like one of the best scarlets.
Lg. 2 for 25c; Med. 4 for 25c; Sm. 6 for 25c.

REGINA 520 (Palmer '53)

Clear amber orange with a small red throat blotch. A tall willowy grower with 6-7 waved and fluted florets open on 18-20 bud flowerheads.
Lg. 2 for 35c; Med. 2 for 25c; Sm. 4 for 25c.

ROBINSON CRUSOE 490 (Lins '44)

A wonderful exhibition novelty that made a lot of friends. Opens 6 wide 5-inch florets of good substance. Color is tan, heavily marbled deep rose-chocolate, striking color.
Lg. 2 for 25c; Med. 4 for 25c; Sm. 6 for 25c.

ROYAL TREAT 452 (Lins '52)

A very ruffled deep blood red. Opens 7-8 ruffled florets of heavy texture with 10 additional buds in color.
Lg. 2 for 25c; Med. 4 for 25c; Sm. 6 for 25c.



SNOWCLAD 500 (Harris '53)

Grand white. Clean-cut starch cream throated alabaster white.

Lg. 2 for 35c.; Med. 2 for 25c; Sm. 4 for 25c.

SNOWDRIFT 400 (Fischer '54)

30" flowerhead 10 florets open. Exhibitors white par excellence, heavy substance formal placement.

Lg. 2 for 35c; Med. 2 for 25c; Sm. 4 for 25c.

SOUTHERN BELLE 483 (Fischer '52)

A vivid pink with a contrasting snowy throat. A silvery blue aura places it in the smoky class.

Lg. 2 for 25c; Med. 4 for 25c; Sm. 6 for 25c.

SPIC & SPAN 444 (Carlson '46)

If you are not growing this tall ruffled pink, get started this year. The nearly perfect growth, spike, placement, and beauty will thrill you.

Lg. 2 for 25c; Med. 4 for 25c; Sm. 6 for 25c.

STORMY WEATHER 480 (Barrett '47)

A rose ash with tall spikes and 7 to 8 florets open. These are well placed and well attached to make a good smoky. A glad well named.

Lg. 2 for 35c; Med. 2 for 25c; Sm. 4 for 25c.

STYLISH 442 (Larus '51)

The color is medium pink shading to a creamy pink throat with a small deep pink dotted blotch at the back. The 5" florets are heavily ruffled. Stylish is one of the loveliest pinks we know.

Lg. 2 for 35c; Med. 2 for 25c; Sm. 4 for 25c.

SUMMER CHARM 440 (Lins '52)

The large wide open florets are fluted and ruffled blush pink, well attached and well placed. Plants are tall and vigorous with medium flower heads.

Lg. 2 for 35c; Med. 2 for 25c; Sm. 4 for 25c; Bbts. 50 for 35c.

SWEET SIXTEEN

A pure pastel pink that shades to a light cream on the lower petals. Opens seven to eight well placed florets on a tall sturdy, spike.

Lg. 2 for 35c; Med. 2 for 25c; Sm. 4 for 25c.

TAN GLO 480 (Arenius '54)

A clear pastel tan with a rosy tint. Will open 8-10, good placement, strong healthy plants.

Lg. 25c ea.; Med. 2 for 35c; Sm. 2 for 25c; Bbts. 30 for 35c.

TRAILS END 562 (Ficht '49)

Deep lavender-rose with a creamy yellow throat. Has 7-8 extra large frilled florets open on a medium spike. You certainly will call this one beautiful.

Lg. 2 for 25c; Med. 4 for 25c; Sm. 6 for 25c.

TRAVELER 460 (Flad-Torrie '52)

A light rose pink with small deeper throat mark deep in each floret ruffled florets, good placement and attachment, open 10-12 on large bud spike.

Lg. 2 for 35c; Med. 2 for 25c; Sm. 4 for 25c.

TYRONE 466 (Deam '52)

Clean orchid lavender that opens 7-9 well placed blossoms on a tall spike.

Lg. 2 for 25c; Med. 4 for 25c; Sm. 6 for 25c.

WHITE CHALLENGE 501 (Arnett '47)

White with a pale rose blush and a rose throat mark. Heavy substance, formal placement, straight, free from crooks, 22 buds, 8-10 open.

Lg. 2 for 25c; Med. 4 for 25c; Sm. 6 for 25c; Bbts. 80 for 35c.

WHITE CLOUD 500 (Roberts '52)

Truly a pure white. The florets are really huge up to 7 inches in diameter beautifully ruffled and crinkled. Opens about six on tall stem with fair flowerhead.

Lg. 2 for 25c; Med. 4 for 25c; Sm. 6 for 25c.

WHITE GODDESS 500 (Roberts '48)

Heavily ruffled white shading into cream throat. Opens up to 8 large florets. First one sometimes misplaced. Very vigorous grower.

Lg. 2 for 25c; Med. 4 for 25c; Sm. 6 for 25c.

WHITE TOWER 501 (Lins '51)

A tower of white, extra tall, straight spikes with giant white florets. A red dart on the cream throat blotch adds the necessary touch of color.

Lg. 2 for 35c; Med. 2 for 25c; Sm. 4 for 25c; Bbts. 40 for 35c.

WILD TIGER 490 (Evans '49)

Reddish brown with clear deep brown stripe on petals resembling a tiger lily.
Lg. 2 for 25c; Med. 4 for 25c; Sm. 6 for 25c.

WINONA 406 (Barrett '52)

Ruffled cream with light cerise throat lines. Fine florets and basket variety which has won many prizes.
Lg. 25c ea.; Med. 2 for 35c; Sm. 2 for 25c.

VAGABOND PRINCE 391 (Palmer '34)

Mahogany brown with a flame blotch in throat. An old favorite.
Lg. 2 for 25c; Med. 4 for 25c; Sm. 6 for 25c; Bbts. 100 for 35c.

10 RATE PRICING: Varieties priced 8 for 25c are 10 for 30c; 6 for 25c are 10 for 40c; 5 for 25c are 10 for 45c; 4 for 25c are 10 for 55c; 3 for 25c are 10 for 75c; 2 for 25c are 10 for \$1.00; 2 for 35c are 10 for \$1.50. The varieties priced per each are 10 for 8 times the each rate.

QUANTITY PRICES

Prices are quoted per 100 Post Paid in U. S. A. Not less than 25 bulbs of a variety and size sold at these lower rates. 250 bulbs of a variety and size twice the 100 price.

Bulbs sizes quoted below: Large are No. 1 (1½" up) and No. 2 (1¼-1½") Medium are No. 3 (1-1¼") and No. 4 (¾-1"); Small are No. 5 (½-¾"); and No. 6 (under ½").

Priced Per 100 Prepaid	No. 1	No. 2	No. 3	No. 4	No. 5	No. 6	Bbts.
GROUP I	7.00	6.00	5.00	3.50	2.50	1.75	.40
GROUP II	8.00	7.00	6.00	4.00	2.75	2.00	.50
GROUP III	9.00	8.00	6.50	5.00	4.00	2.75	1.25
GROUP IV	12.00	11.00	9.00	7.50	6.00	4.50	2.00

GROUP I

Annamae	Golden Arrow	Margaret Jean	Pandora
Burma	Florence Nightengale	My Dear	Red Charm
Columbia	King David	Myrna Fay	Spic & Span
			Stylish

GROUP II

Alfred Nobel	Elmer's Rose	Noweta Rose	Poinsettia
Bridal Orchid	Gold	Okinawa	Red Cherry
Buckeye Bronze	Indian Summer	Pactolus	Red Wing
Captain Kidd	Leah Gorham	Parthinea	Sweet Sixteen
Crinkle Cream	Mother Fischer	Patrol	White Goddess
			Wild Tiger

GROUP III

Boise Bell	Crusader	Robinson Crusoe	Trails End
Brandy Wine	Mable Violet	Royal Treat	Tyrone
Chinook	Painted Lady	Southern Belle	White Cloud
Coral Ace	Radiance	Stormy Weather	Winona

GROUP IV

Exotic	Juno	Purple Burma	Regina
Forsythia	Look	Rajah	Snowclad
Gratia	Lilac Time	Recompense	Snowdrift
			Traveler

FANMAKING ASSORTMENT: This assortment will make you a Glad Fan. It is made up of 25 or more varieties, covering the complete color range. Each assortment is hand selected. **BEST VALUE** if you are not interested in variety names. Large \$6.50. Medium \$5.00 per 100; Large \$3.50, Medium \$2.75 per 50; 250 Bulbs are Twice the 100 price.